

JONNYCAKE CENTER OF PEACE DALE

2009 Snapshot – Year in Review

CLIENT DEMOGRAPHICS AS OF **December 31, 2009**

TOTAL CLIENT HOUSEHOLDS: **1,546** (466 new households registered in 2009)
TOTAL NUMBER OF CLIENTS: **3,839**

GENDER (BY TOTAL CLIENTS)

MALE	1,762	46%
FEMALE	2,077	54%
ADULTS	1,974	51%
MALE	814	41%
FEMALE	1,160	59%
CHILDREN	1,657	43%
MALE	872	53%
FEMALE	785	47%
ELDERS	208	6%
MALE	76	37%
FEMALE	132	63%

ETHNICITY (BY TOTAL HOUSEHOLDS)

WHITE	1,176	76%
BLACK	52	3%
NATIVE AM	145	9%
ASIAN	7	1%
HISPANIC	32	2%
OTHER	134	9%

FAMILY SIZE (BY TOTAL HOUSEHOLDS)

1	573	37%
2	323	21%
3	288	19%
4	182	12%
5	113	7%
6	37	2%
7	18	1%
8	3	.3%
9	4	.3%
10	5	.4%

TOWNS (BY TOTAL HOUSEHOLDS)

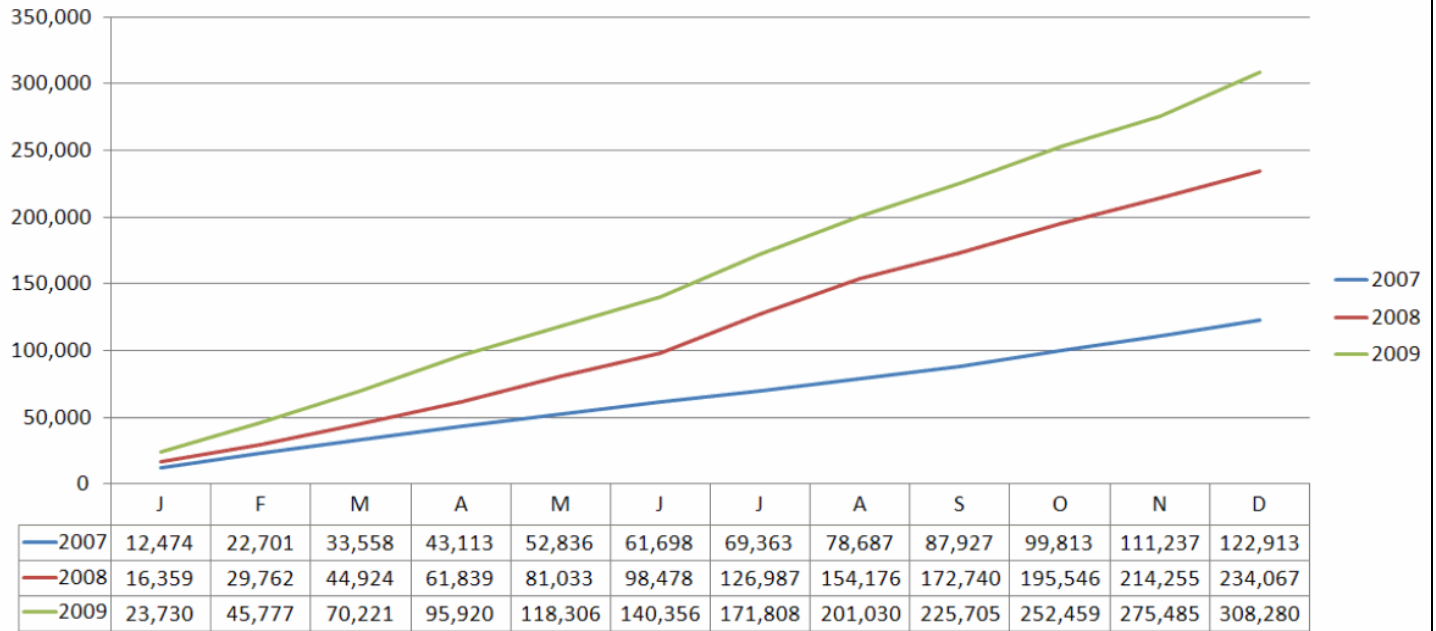
SOUTH KINGSTOWN	851	56%
NARRAGANSETT	284	18%
NORTH KINGSTOWN	201	13%
OTHER – SOUTH COUNTY	188	12%
OTHER – RHODE ISLAND	22	1%

2009 HOLIDAY PROGRAMS

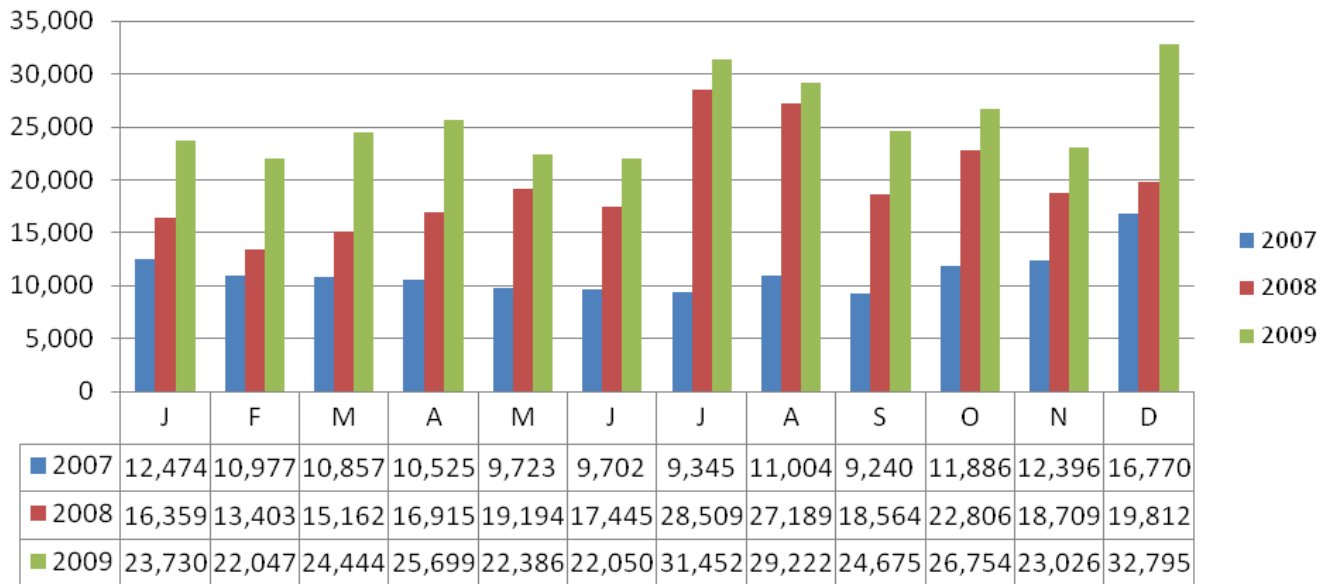
THANKSGIVING: The Jonnycake Center provided Thanksgiving meal baskets to 513 households, representing 1,291 individuals. With the help of volunteers, 94 of these meals were delivered to the homes of elderly and disabled clients

DECEMBER: The Jonnycake Center provided holiday meal baskets to 718 individuals in 375 households. In addition, we provided gifts to 540 children, teen gift cards to 232 teens, and we also provided 114 senior and disabled clients with holiday gifts for the season. Holiday meals were delivered to 81 elderly and disabled client households.

CUMULATIVE MEALS (includes special programs)

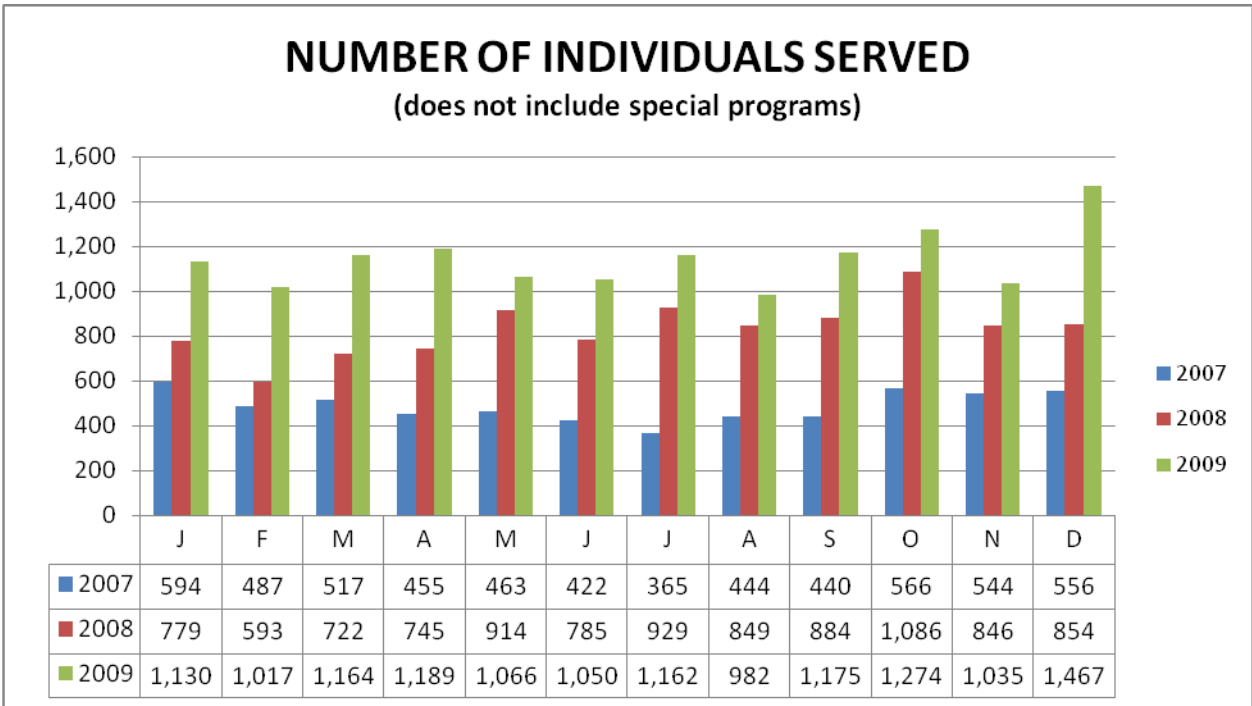
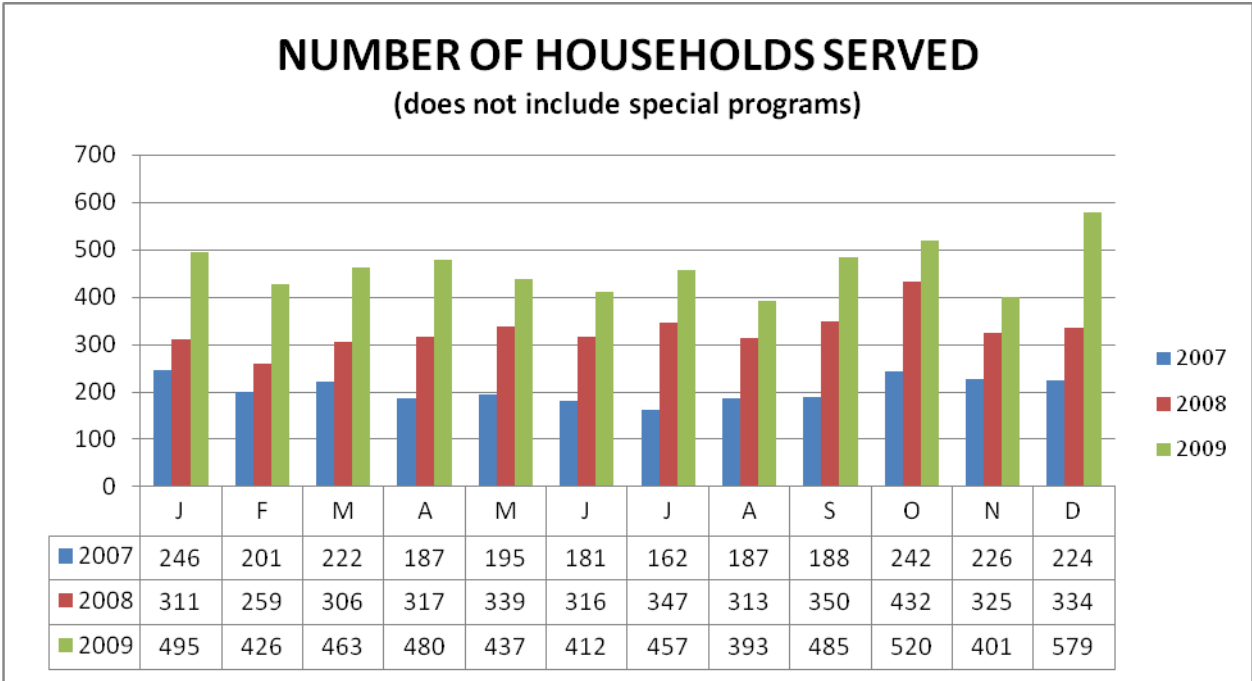


FOOD PANTRY MEAL DISBURSEMENTS (Includes special programs)

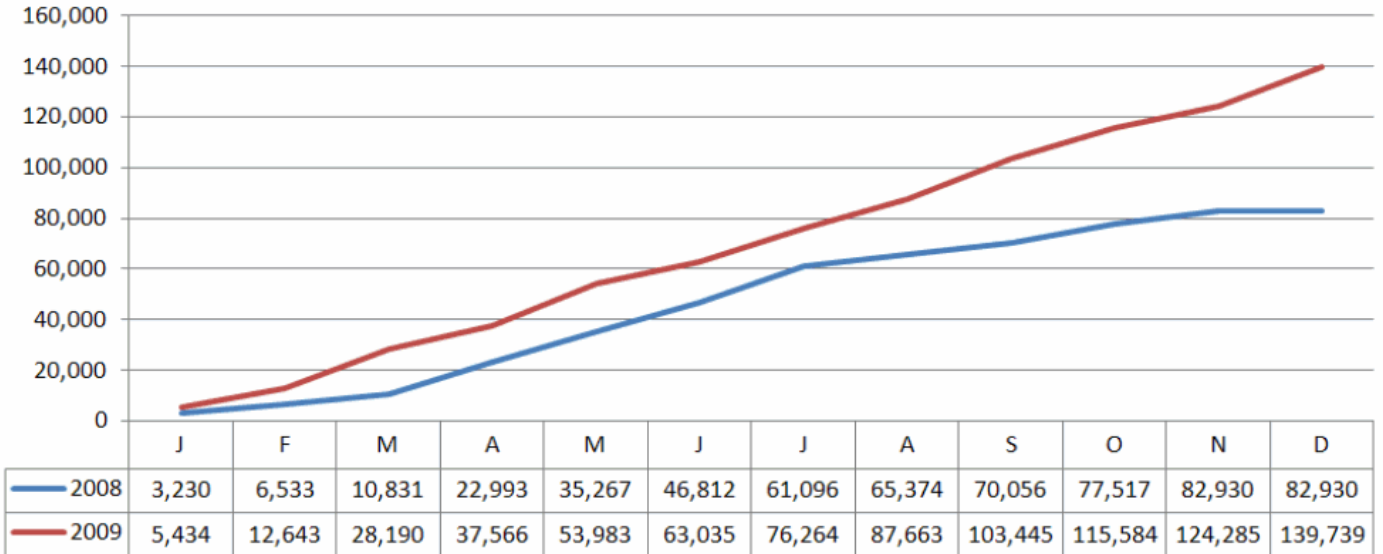


Totals in both charts above include Thanksgiving and December holiday meals as well as the 18,090 meals provided to children through our school vacation breakfast and lunch program.

Both charts below refer only to emergency food baskets distributed. Special programs include school vacation breakfast and lunches, and Thanksgiving and December holiday food baskets

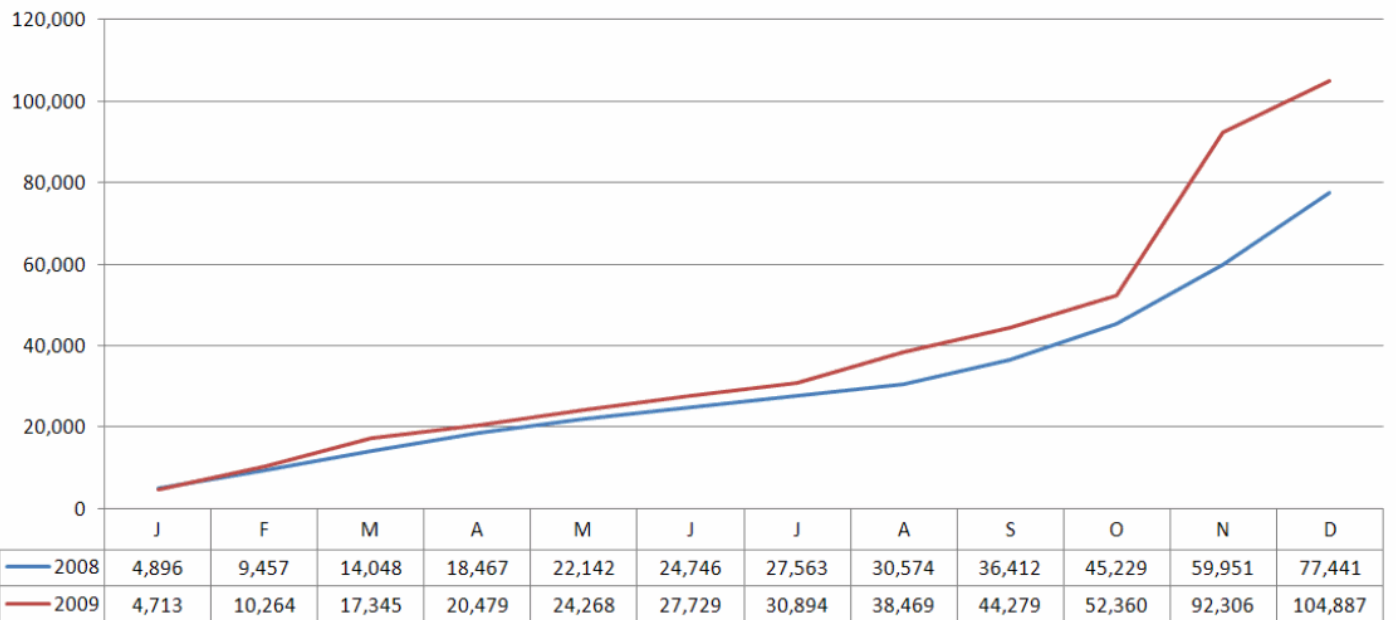


CUMULATIVE FOOD BANK RECEIPTS (IN POUNDS)



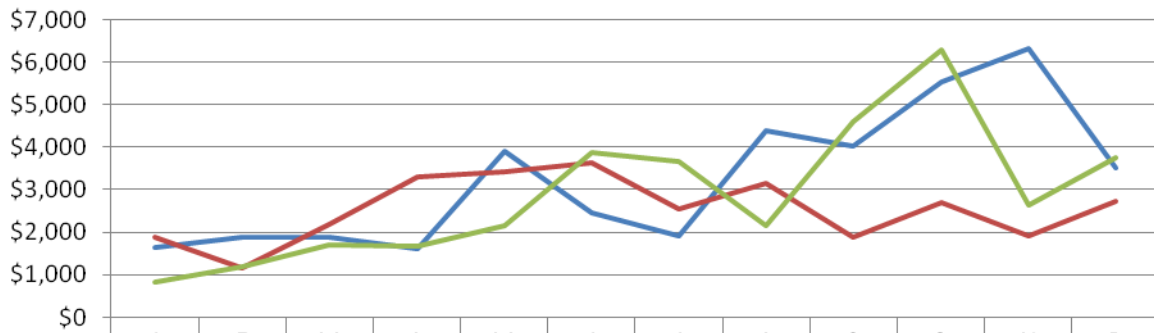
(Food received from the RI Community Food Bank – both purchased and donated)

CUMULATIVE FOOD DONATIONS (IN POUNDS)



(Not including donations from RI Community Food Bank)

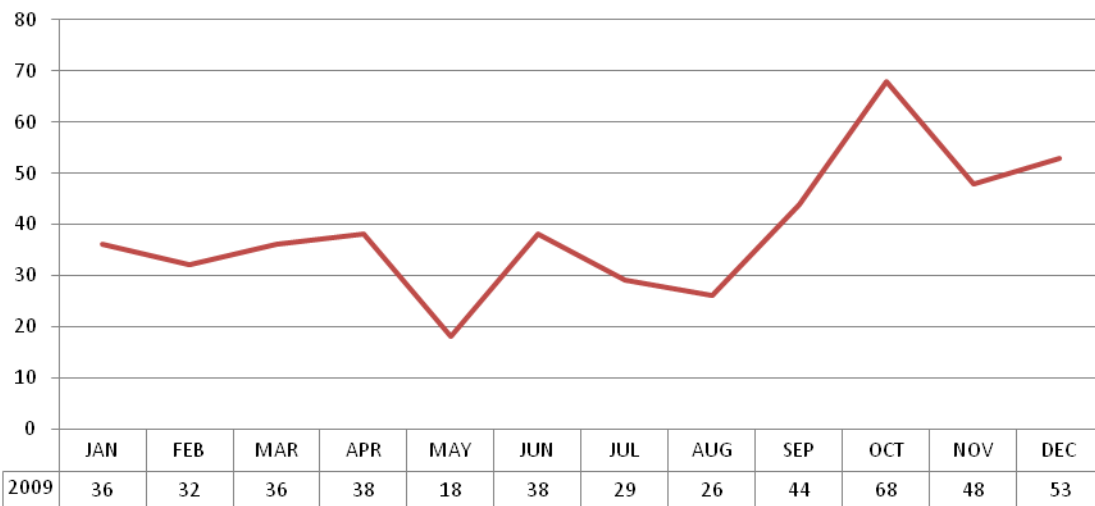
CLOTHING/HOUSEHOLD DISBURSEMENTS (\$ Value)



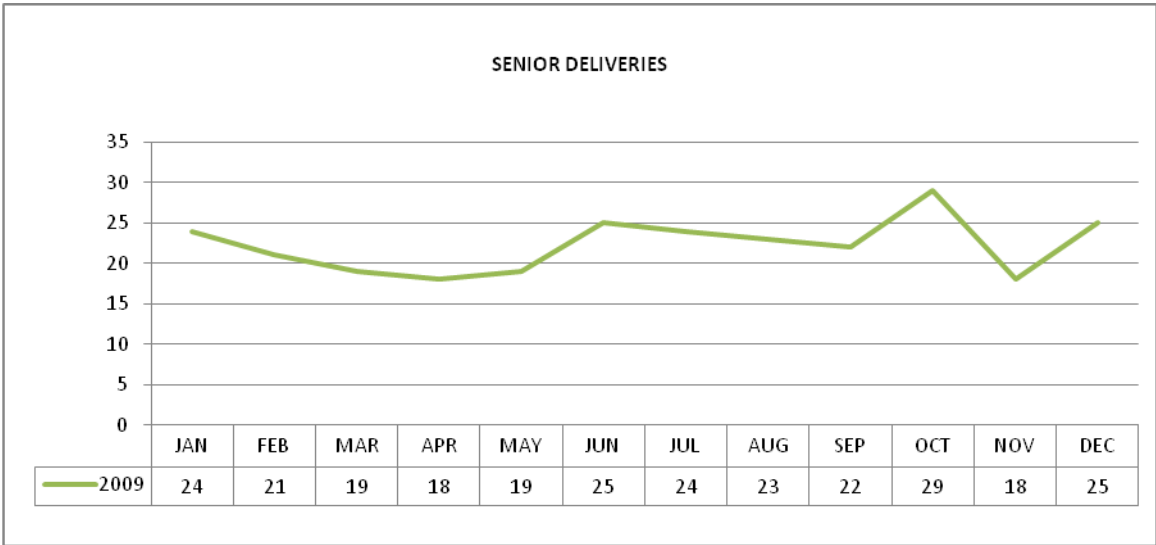
2007	\$1,639	\$1,892	\$1,883	\$1,600	\$3,912	\$2,446	\$1,900	\$4,400	\$4,026	\$5,539	\$6,312	\$3,511
2008	\$1,888	\$1,160	\$2,186	\$3,307	\$3,418	\$3,625	\$2,560	\$3,158	\$1,896	\$2,711	\$1,926	\$2,735
2009	\$836	\$1,183	\$1,688	\$1,664	\$2,169	\$3,866	\$3,654	\$2,158	\$4,600	\$6,281	\$2,645	\$3,742

Value of clothing and household items disbursed from our retail thrift store to clients free of charge.

NEW CLIENT INTAKES (by number of households)



A total of 466 new households registered with us in 2009.



(Does not include 94 deliveries made for Thanksgiving and 81 for December holiday meals)

