

JONNYCAKE CENTER OF PEACE DALE

2010 Snapshot – Year in Review

CLIENT DEMOGRAPHICS
AS OF **December 31, 2010**

TOTAL CLIENT HOUSEHOLDS: 1,883 (337 new households registered in 2010)
TOTAL NUMBER OF CLIENTS: 4,529

GENDER (BY TOTAL CLIENTS)

MALE	2,092	46%
FEMALE	2,437	54%

ADULTS 2391 53%

MALE	993	42%
FEMALE	1,398	58%

CHILDREN 1,911 42%

MALE	1015	53%
FEMALE	896	47%

ELDERS 227 5%

MALE	84	37%
FEMALE	143	63%

TOWNS (BY TOTAL HOUSEHOLDS)

SOUTH KINGSTOWN	1035	55%
NARRAGANSETT	347	19%
NORTH KINGSTOWN	249	13%
OTHER – SOUTH COUNTY	227	12%
OTHER – RHODE ISLAND	25	1%

ETHNICITY (BY TOTAL HOUSEHOLDS)

WHITE	1,446	77%
BLACK	68	3%
NATIVE AM	171	9%
ASIAN	9	1%
HISPANIC	47	2%
OTHER	142	8%

FAMILY SIZE (BY TOTAL HOUSEHOLDS)

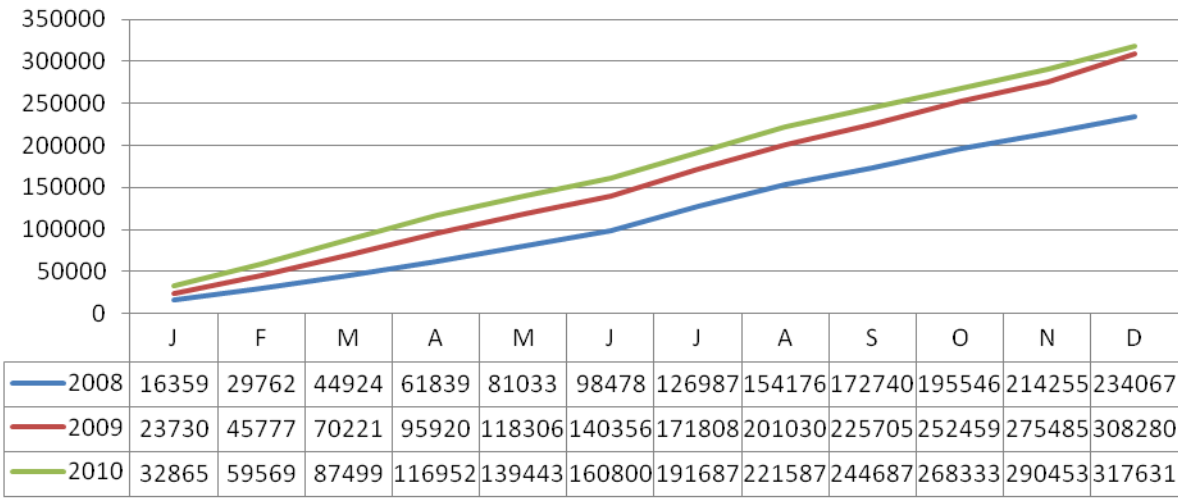
1	749	40%
2	382	20%
3	337	18%
4	213	11%
5	128	7%
6	41	2%
7	20	1%
8	3	.2%
9	4	.2%
10	6	.3%

2010 HOLIDAY PROGRAMS

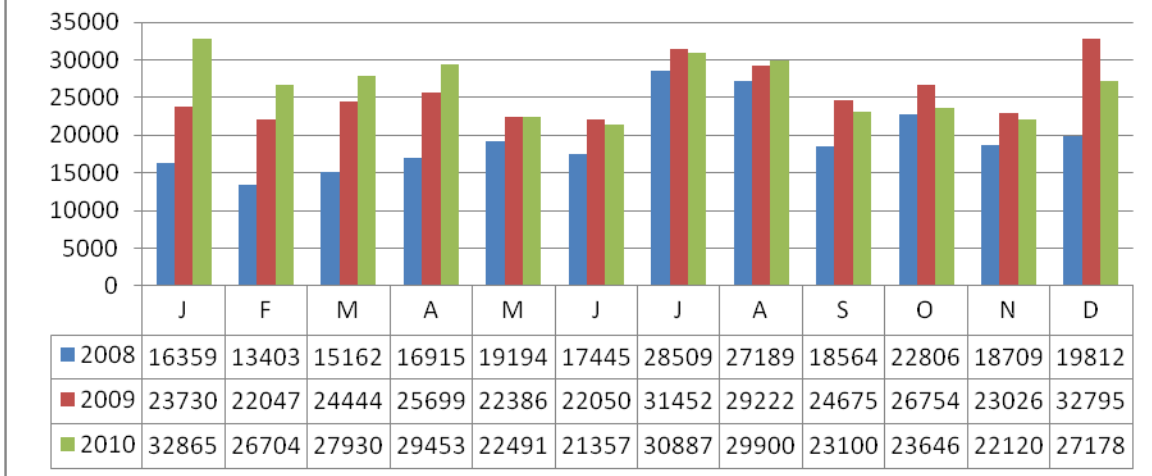
THANKSGIVING: The Jonnycake Center provided Thanksgiving meal baskets to 448 households, representing 1,099 individuals. With the help of volunteers, 71 of these meals were delivered to the homes of elderly and disabled clients

DECEMBER: The Jonnycake Center provided holiday meal baskets to 967 individuals in 371 households. In addition, we provided gifts to 379 children, teen gift cards to 126 teens, and we also provided 102 senior and disabled clients with holiday gifts for the season. Holiday meals were delivered to 70 elderly and disabled client households.

CUMULATIVE MEALS (includes special programs)

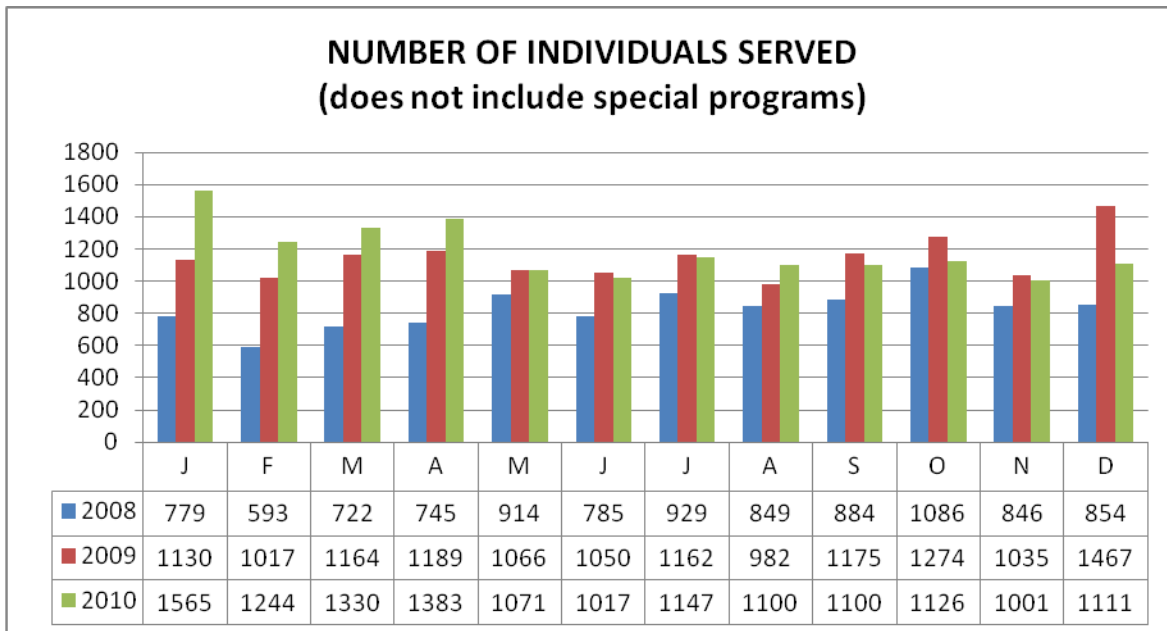
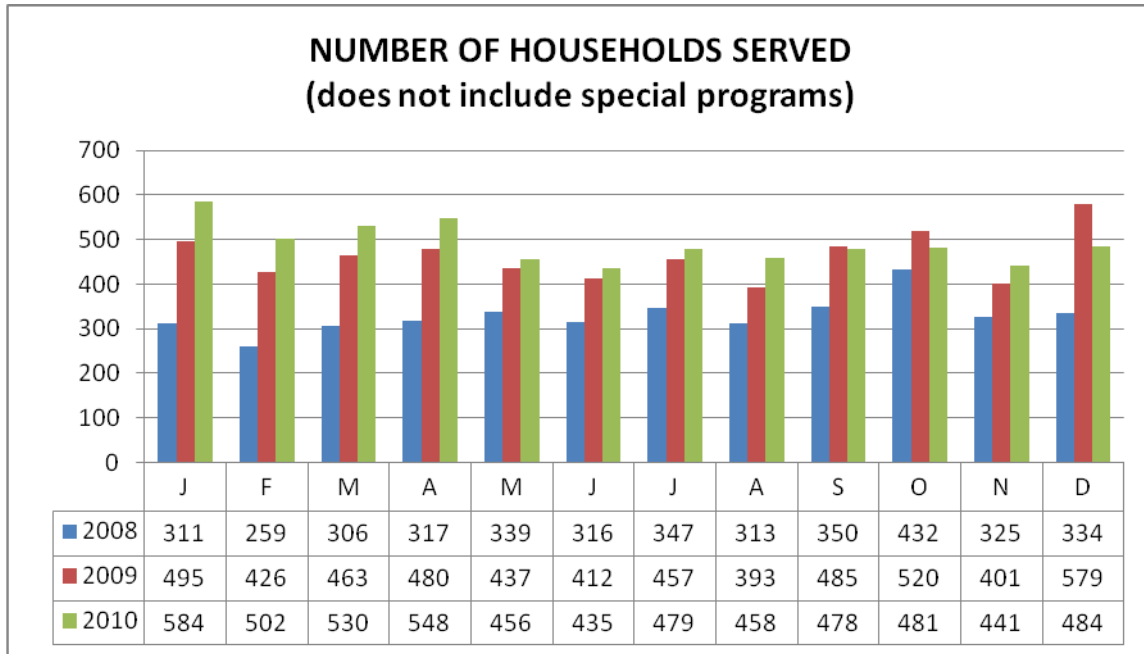


FOOD PANTRY MEAL DISBURSEMENTS (includes special programs)

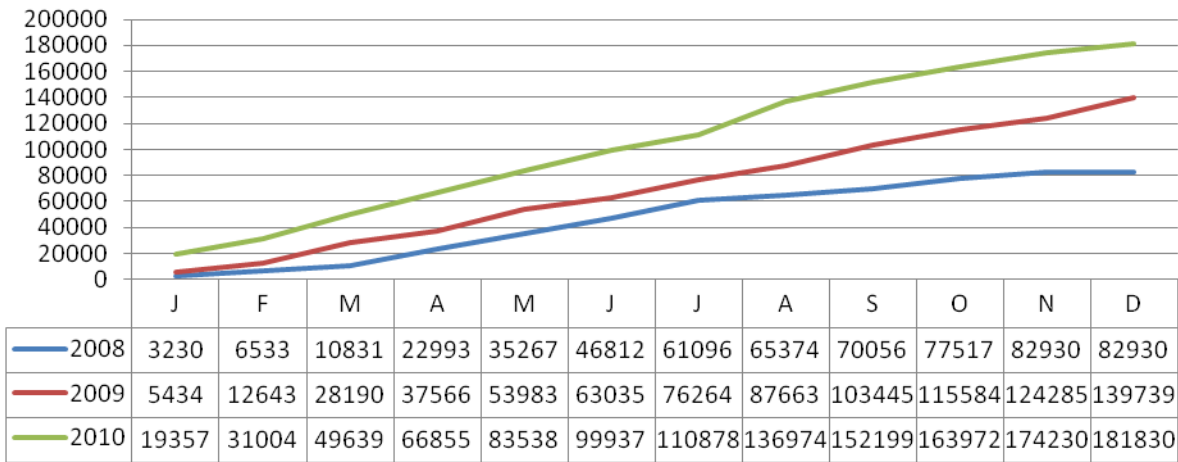


Totals in both charts above include Thanksgiving and December holiday meals as well as the 17,470 meals provided to children through our school vacation breakfast and lunch program.

Both charts below refer only to monthly emergency food baskets distributed. Special programs include school vacation breakfast and lunches, and Thanksgiving and December holiday food baskets.

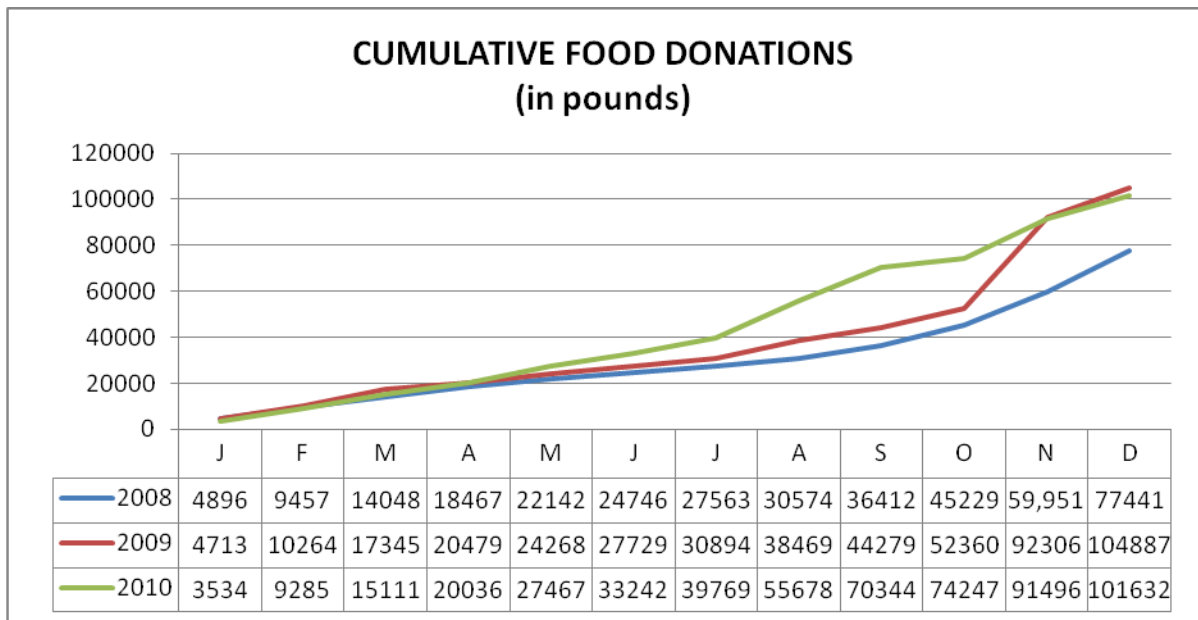


CUMULATIVE FOOD BANK RECEIPTS (in pounds)

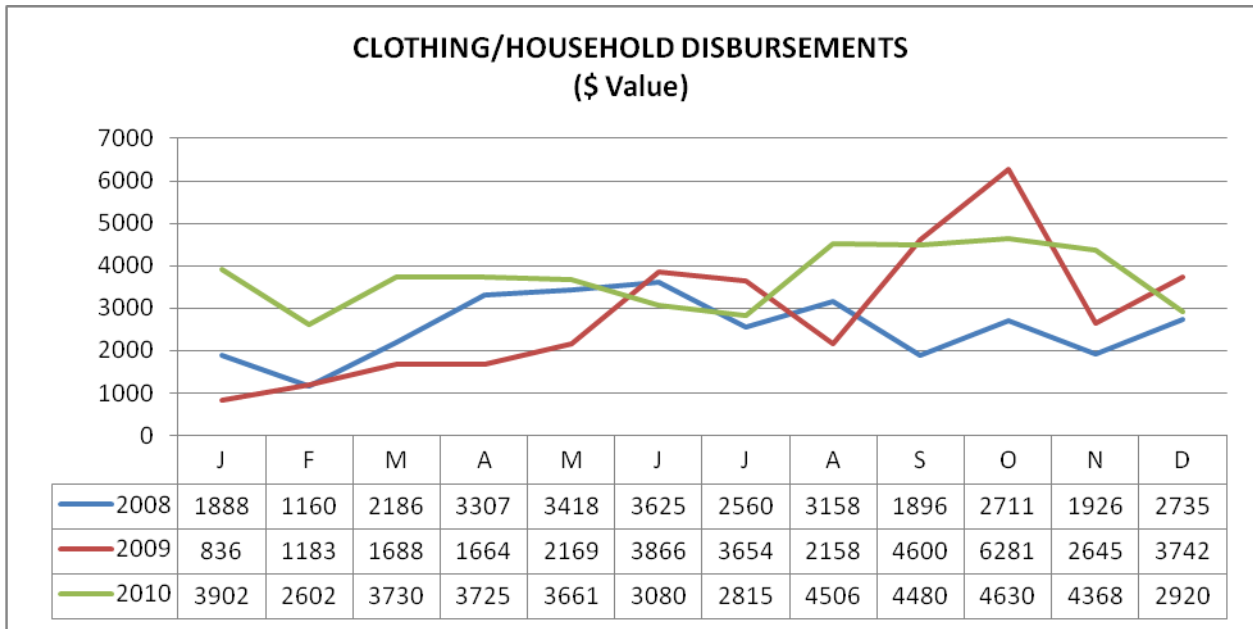


(Food received from the Rhode Island Community Food Bank – both purchased and donated)

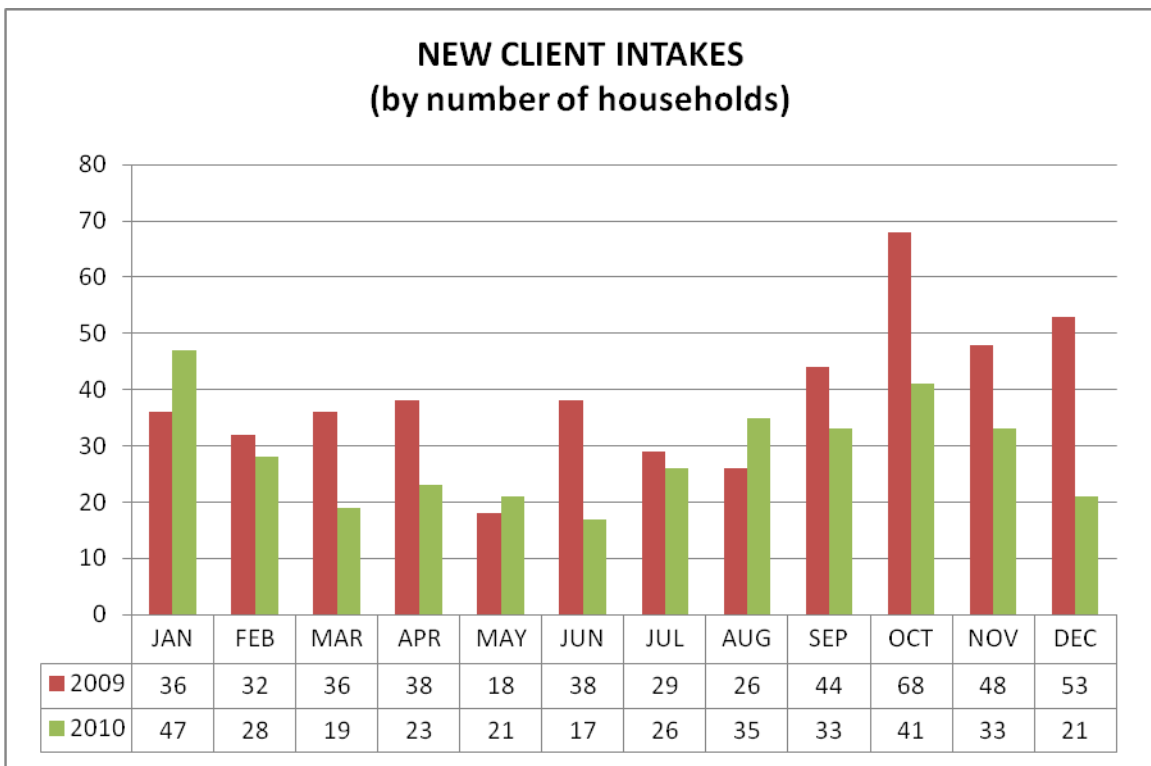
CUMULATIVE FOOD DONATIONS (in pounds)



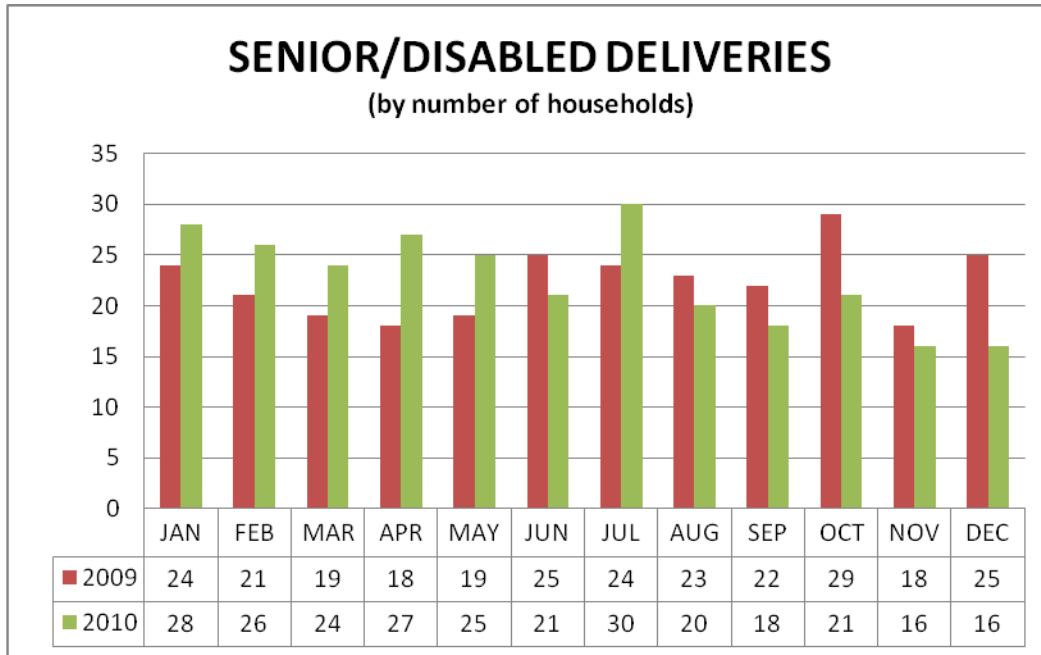
(Not including donations from the Rhode Island Community Food Bank)



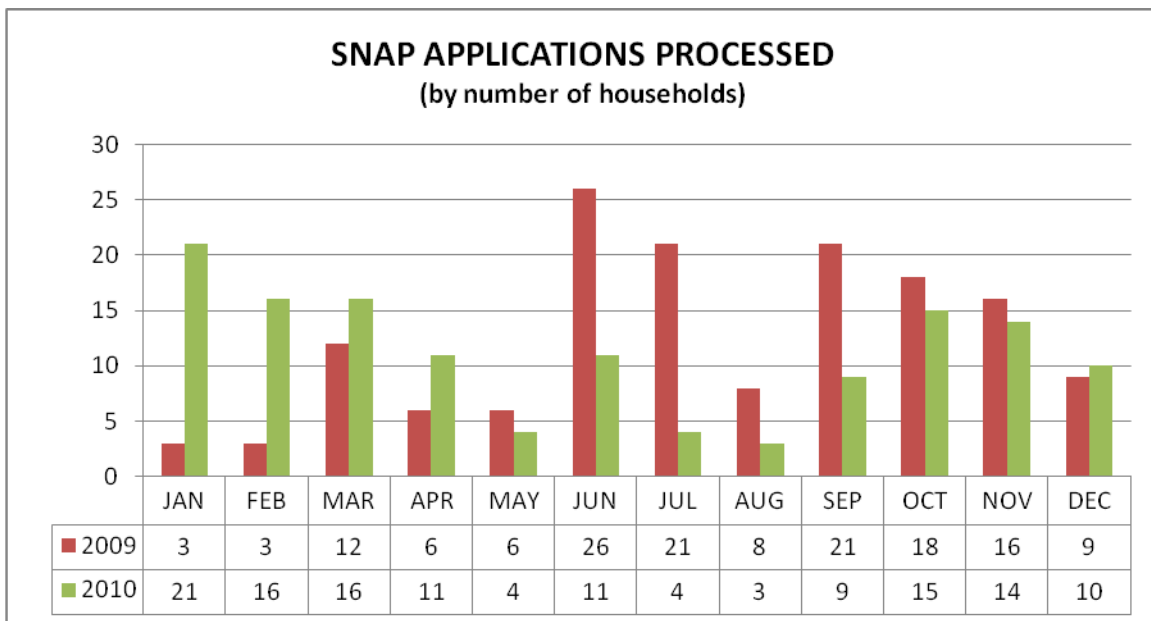
Value of clothing and household items disbursed from our retail thrift store to clients, free of charge.



A total of 337 new households, comprised of an additional 690 individuals, registered with us for help in 2010.



(Does not include 71 deliveries made for Thanksgiving and 70 for December holiday meals)



The Jonnycake Center provided assistance with the Supplemental Nutrition Assistance Program (SNAP – formerly known as the Food Stamp Program) application to a total of 134 households in 2010.