



**Jonnycake Center  
For Hope**  

---

*here to help*

## Here to Help



*"The Jonnycake Center provides things that help you get your life back on track ... and they don't make you feel ashamed when you need help."*

Bethany had received periodic food assistance during challenging times in the past. But when her son was diagnosed with a rare form of cancer that was going to require intensive treatment over a prolonged period of time, the Jonnycake Center stepped up to help her navigate the resources available to her family for a variety of needs. The Center has been there for Bethany's family to help with food, transportation, financial assistance and advocacy.

**A** t this very moment ...

*... a father is fretting about an empty fridge.*

*... a mother had major surgery, leaving her unable to work and pay rent.*

*... a teen struggles in school, having suffered the effects of lead poisoning as a young child.*

*... a sick child can't get to the doctor because the family car is broken down.*

*... an elderly gentleman ran out of oil, leaving him with no heat or hot water.*

---

Every day, community members enter our doors in need of help.  
Our goal is to give them hope.

---

The Jonnycake Center has been helping our neighbors in need overcome the profound effects of hunger and poverty for close to fifty years.

Today, our team provides basic needs, resources, and more. We help move individuals and families from crisis to stability by providing food, clothing, and financial assistance; improving access to housing, transportation, health care, and other vital resources; and we are training our members to be empowered leaders, working to improve the quality of life in their community.



## A Message From Our Campaign Leaders



*South County has become a vacation destination, with world class beaches and waterfront homes, exquisite restaurants, and an abundance of outdoor activities.*

*Yet not everyone who lives here is able to enjoy all that our community has to offer.*

*As South County residents, we are keenly aware that many of our neighbors cannot meet even their most basic needs.*

*As southern Rhode Island becomes a highly desirable place to live and play, many families with deep roots in the area – some dating back centuries – are facing a severe shortage of affordable housing. Our part-time, seasonal economy leaves many workers – including housekeepers, local fisherman, and home health aides – struggling to keep healthy food on the*

*table and the family car on the road. Our Native American neighbors face extreme rates of childhood poverty, significant health and education disparities, and feelings of isolation.*

*Over time we have enhanced our programs and services to meet the evolving needs of our community. While our capacity to help has grown, our physical space has not.*

*Everyone agrees – our staff, volunteers, partners, and most importantly, those we serve – that our current facilities are inadequate, inaccessible, and disconnected.*

*We need a place where you can send a family member, friend, or neighbor and have confidence they will get the help they need in a space that delivers safe, effective, and efficient services under one roof.*

*During the summer of 2019 we purchased the former Peace Dale Grammar School. Once renovated, this local landmark will provide a bright, inviting, and easy to navigate space to accommodate our current and future needs. As you can imagine, renovating an older building is an investment that cannot be supported through our annual budget. As a result, The Jonnycake Center is launching a \$1.68 million Capital Campaign to offset the costs of renovations and future maintenance.*

*Our success helping others has been made possible by the generous support of local businesses and residents. We are hopeful that once again, we will be able to count on our community to help us complete this pivotal project.*

*We invite you to read more to learn how you can help us build a new home for hope.*

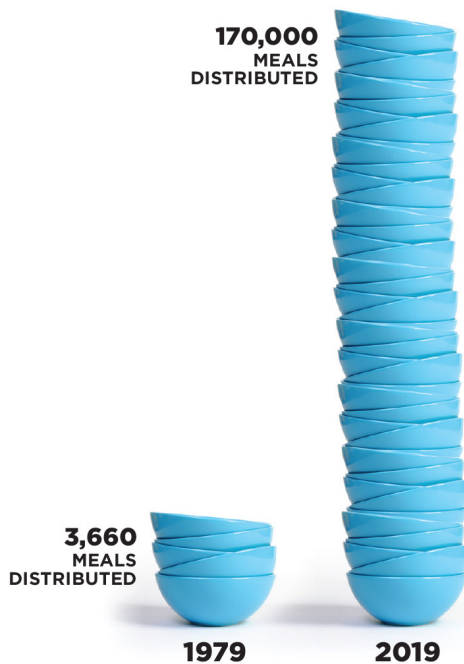
A handwritten signature in black ink, reading "Laurie White Taricani".

Laurie White Taricani  
Campaign Chairwoman

A handwritten signature in black ink, reading "Kate Brewster".

Kate Brewster  
Executive Director

## The Need



When our building was purchased in 1979, we distributed enough food for 3,660 meals annually. Today, more than 170,000 meals are distributed each year.

In addition to providing more food, we are growing our programs to put community members on a path towards physical, emotional, and financial health. Personal coaching, community health outreach, free tax assistance, and more are offered to provide a more holistic approach to ending hunger.

---

### While our programs and services have grown, our physical space has not.

---

Our food pantry can only accommodate two shoppers at a time, leaving others to wait outside during busy times. The pantry is not big enough for shoppers to inspect and select food off the shelves themselves.



We lack a kitchen to support our popular cooking classes. Seniors must climb a steep set of stairs to get their taxes filed for free, and a shortage of offices makes privacy difficult, even when members are discussing deeply personal issues.

Perhaps the most significant challenge is that our social service team is located 300 feet from our food pantry and separated by a busy parking lot, presenting significant barriers to effective service delivery. While our volunteers are well trained and highly capable, every pantry visit is a missed interaction with our social service staff who are trained to assess for problems and provide interventions.

## The Need

*We know that more than the medical care you receive, health is influenced by the food you eat, where you live, and other social and environmental factors. The Jonnycake Center is playing a lead role in addressing the many things that help to improve the health and well-being of South County residents ... This new space will allow them to have an even greater impact.*

*- Lou Giancola,  
Retired President, South County Health  
Board Member, Capital Campaign Committee Member*



The Jonnycake Center engaged in a strategic planning process in 2018 after undergoing a significant transition of executive and board leadership, and a substantial growth in programs and services. Through that process we heard from staff, volunteers, board members, donors, community partners, elected officials, and most importantly, our members. It was clear our stakeholders agreed on one thing: we needed a new facility. Thanks in part to a transformational bequest, we decided the time had come to explore a move.

Through an exhaustive search, we found a larger building to relocate our core programs and services. We purchased the former Peace Dale Grammar School, located at 22 Kersey Road in Peace Dale, which will provide ample space for a greatly expanded food pantry, social services department, our administrative team, as well as a large community space for nutrition and cooking programs, wellness initiatives, and future partnerships.

The current square footage of our food pantry and administrative space is 2,900 square feet. The new facility will provide us with 5,800 square feet – doubling our size.



## The Need

*“They’ve helped a lot of people in our community. It’s a lot of support. Even if you just need someone to talk to.”*



For a little over five years, Ashley has been coming to the Jonnycake Center. Her family has received critical assistance in times of financial hardship with clothing, nutritious food, and school supplies, as well as summer camps where her kids are able to learn and grow. She has built some wonderful relationships with the staff at the Center and considers them a central element of her support system.

# A New Home for Hope

Our new home ...

... will house essential services under one roof.



The impact of a new space is significant. Included among the most important improvements are:

**The Jonnycake Market** – Our food pantry will be co-located with social service staff, allowing for timely identification of needs and interventions with hundreds of food pantry visitors each month. Our goal is to prevent manageable problems from becoming overwhelming obstacles.

The Jonnycake Market will have ample room to safely store food items and the capacity to serve more shoppers simultaneously. There will be a comfortable, indoor waiting area during busy periods.

**New Programs** – Cooking classes, free tax assistance, and other programs and partnership will have appropriate space and equipment.

**Accessible for All** - The building will be accessible, safe, and easy to navigate. A ramp will be available to travel from the parking lot to the first floor and a

limited use elevator is being installed for travel between the first and second floor. Visitors will no longer have to travel through dangerous parking lots or busy driveways to gain access.

**Community Space** - A new community room and expanded office space will allow us to introduce innovative approaches to serving the community through partnerships and collaborations.

Moreover, this building will be a resource for our entire community – those who want to volunteer their time, including people with disabilities who need a supportive work experience; farmers and retailers who want to donate produce and groceries; children who want to help their neighbors; and donors who want to invest in an organization that lifts up our entire community.



# A New Home for Hope

## CONVENIENCE and COMPASSION



### First Floor

The first floor will house our food pantry - “Jonnycake Market” - complete with a waiting area and significantly enhanced shopping space. Our reimagined food pantry will recreate a true grocery store experience, allowing shoppers to select and handle their own food items.

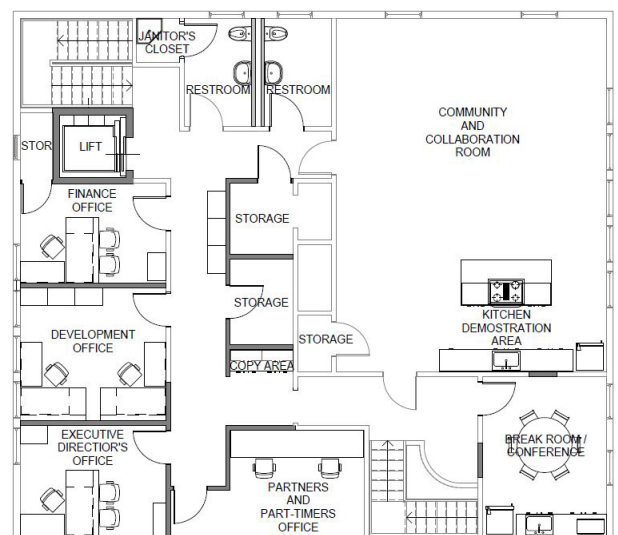
Our social service staff will be co-located with the Market, allowing for regular interactions and timely assistance with visitors.

## COMMUNITY and COLLABORATION

### Second Floor

Cooking classes, wellness initiatives, community meetings, and tax assistance will be provided in an appropriate setting, and we will offer our partners space to address needs that may arise in our community.

Our administrative team will have adequate space to conduct the business of the Center.



# A Strong Foundation

## Financing the project ...

The total estimated cost of the project is \$1.68 million. This includes the purchase, soft costs, renovations, landscaping, appliances, and the creation of a maintenance fund. Thanks to a generous bequest and a healthy reserve fund, we were able to purchase the building in a timely fashion for just under \$500,000. The remaining costs are outlined below.

### Estimated Costs

|               |                    |
|---------------|--------------------|
| Purchase:     | \$500,000          |
| Renovations:  | \$900,000          |
| Soft costs:   | \$100,000          |
| Maintenance:  | \$100,000          |
| Landscaping:  | \$40,000           |
| Furnishings:  | \$40,000           |
| <b>Total:</b> | <b>\$1,680,000</b> |

### Early Support

\$365,000 Bequest  
\$500,000 Campaign lead gifts

---

Generous lead gifts from:  
The Wilcox Family Foundation  
Centreville Bank Charitable Foundation  
The Champlin Foundation



*We visited the Jonnycake Center looking for additional opportunities to assist those in need in Washington County and were quickly impressed by the scope of its*

*operations. We asked Kate Brewster 'How can we help?' and the rest, as one might guess, is now history. The Center meets all of the performance parameters of the Wilcox Family Foundation and we are honored to be part of the Capital Campaign.*

*- Claire and Greg Wilcox,  
Wilcox Family Foundation*

The Center has a proven track record of fiscal health and growth. Our diversified streams of revenue are derived through donations, grants from community and family foundations, thrift store sales, special events, and in-kind donations such as food, clothing, furniture, and holiday gifts. Through careful management and stewardship, funds have been used effectively and efficiently to provide more direct assistance to households in need. The Center runs a lean operation, with just seven (7) full-time and as many part-time employees who are supported by a loyal base of volunteers who donated 10,000 hours of their time last year.

### The Jonnycake Center ...

relies heavily on the good will of our community. With virtually no state or federal funds, we count on the generosity of businesses, the faith community, and individuals to donate their time, talent, and treasures to make our work possible.

From Matunuck to Mettatuxet and Peace Dale to Point Judith, local residents are deeply committed to our mission of providing basic needs, resources, and hope to our community members. We share a vision of a community without hunger and poverty where everyone can meet their full potential and improve their quality of life.



---

We invite you to join our journey  
to give our community a new home for hope.

---

Our generous donors believe in the services we are providing, the benefits to the community, and know that their gifts will be used responsibly.

As we look to raise funds through this campaign, your support will be more important than ever. Every gift is meaningful.



You Can Help

## Jonnycake Center for Hope

1231 Kingstown Road  
Peace Dale, RI 02879  
401-789-1559

## Jonnycake Market

1183B Kingstown Road  
Peace Dale, RI 02879  
401-284-0303

[W: jonnycakecenter.org](http://jonnycakecenter.org) | [FB: facebook.com/JonnycakeCenter](https://facebook.com/JonnycakeCenter) | [IG: @jonnycakecenter](https://IG: @jonnycakecenter)

---



**JonnyCakes Center  
For Hope**

---

*here to help*

---